

ID Service at SNSB

Stefan Seifert, Dagmar Triebel

ID Service Overview

Stable identifier in CETAF style:

<http://id.snsb.info/snsb/collection/656114/713618/362615>

Protocol and dedicated domain name

Organization / instance

Database / module

Internal database identifier with up to three numbers:

SpecimenID

Unit (Identification)

Part

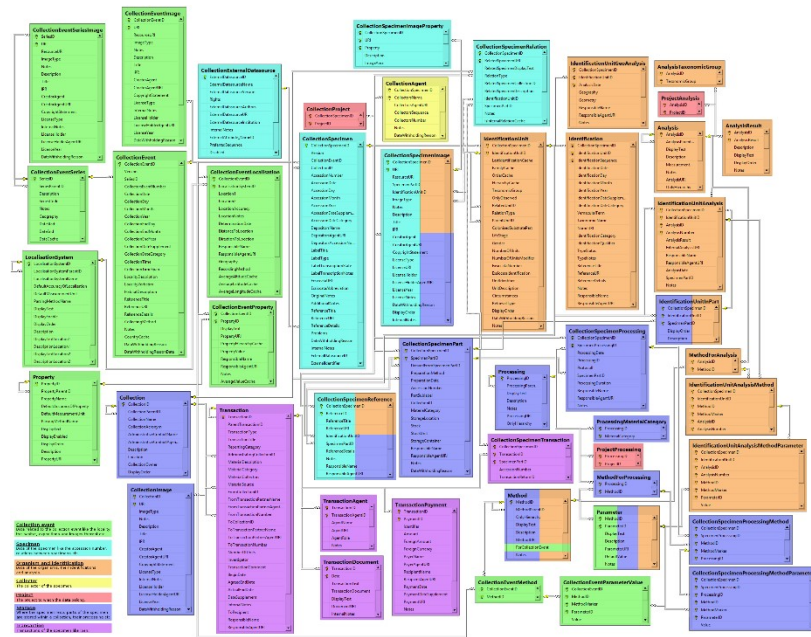
DiversityCollection database model

The database allows a detailed description of each specimen/
voucher/sample:

The specimen itself, e.g., the whole
(herbarium) sheet or insect collection
box

The identification unit which names
the different organisms e.g. the host
plant and the fungi on it

Parts of the specimen e.g. cones of
coniferous trees, plates A or B of a
fossil, tissue, DNA sample



Examples

Observation BFL

Local Query Tool *BFLportal01coll*
A simple user interface to query your local pywrapped databases.

Start » QueryTool » Details
(col=BFLportal01coll)AND(cat=31736 / 961374)

Units details:

Abies alba Mill. Unit ID: 31736 / 961374 Unit GUID: http://id.snsb.info/bfl/collection_bayernflora/31736/961374 Record Basis: HumanObservation Kind of Unit: human observation	Source Institution: BFLportal01coll (BFL) Last update: 2016-06-17T14:33:55.133000
---	--

Identification(s):


Name	Taxonomy
Abies alba Mill.	regnum: Plantae

Gathering:

Locality:	Collector(s):	Other Info:
Country: Germany Locality: Bayern, Freyung-Grafenau, Neuschönau	Anlmer, Wolfgang	Date: 2010-08-09

Additional data:

Date Last Edited: 2016-06-17T14:33:55.133000
Record URI: URL



[View raw XML]

Powered by: 

Observation IBF

Local Query Tool *IBForthopteracoll*
A simple user interface to query your local pywrapped databases.

Start » QueryTool » Details
(inst=UR)AND(col=IBForthopteracoll)AND(cat=446818 / 509412)

Units details:


Nemobius sylvestris (Bosc, 1792) Unit ID: 446818 / 509412 Unit GUID: http://id.snsb.info/snsb/collection_monitoring/446818/509412 Record Basis: HumanObservation Kind of Unit: human observation	Source Institution: IBForthopteracoll (UR) Last update: 2017-10-05T12:19:54.357000
--	---

Identification(s):

Name	Taxonomy
Nemobius sylvestris (Bosc, 1792)	regnum: Animalia

Gathering:

Locality:	Collector(s):	Other Info:
Country: Germany (BRD) Locality: Haid "Landkreisgrube" (ERH, Bayern) Coordinates: 49.7362861633300781 10.9268474578857422 Map!	Schott, Harald	Date: 2012-07-09



Additional data:

Date Last Edited: 2017-10-05T12:19:54.357000
Record URI: URL

[View raw XML]

Powered by: 

What about the Accession Numbers?

A Specimen and a SpecimenPart can have accession numbers.

Not as stable as they should: Never use a real Name/Number as a database key.

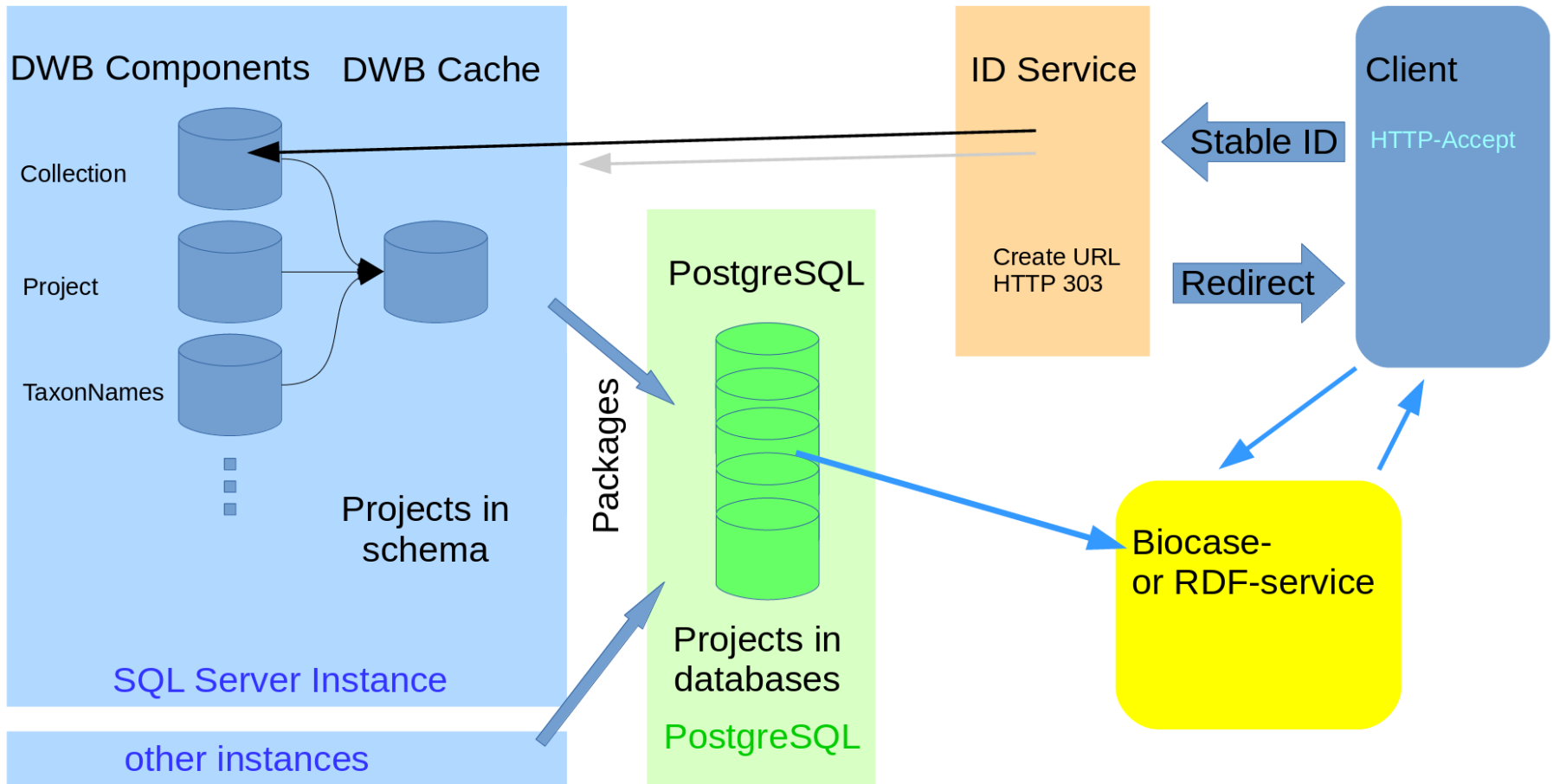
Not as detailed as we like it. With our ID schema we can identify the parasite on the host, or the side of a fossil plate, or a group in a box in a drawer. But also reference single observations or a list of observations which have no accession number label.

We have a convenience service to search for Accession Numbers: <http://id.snsb.info/object/JME-SOS-02215>

Technical Details

- Sanitation of the URL
- Lookup of the IDs in the database
- Analyze the HTTP-ACCEPT-Header
 - application/rdf+xml
 - html as default
- Construct a biocase or RDF request
- Redirect to
 - <http://biocase.snsb.info/wrapper/> or to
 - <http://services.snsb.info/dwbc/v1>

Flow



Used Databases

ID Service:

Direct access to MS SQLServer tables

Read only

Redirects only

RDF Service and Biocase Provider Software

Access to Postgres Databases

Serves data which is ready for publication

Use of ABCD-Packages

Implementation

- **Python with Flask and SQL-Alchemy**
- **Behind Apache-Proxy**
- **Monitoring via Nagios**

ID Examples and Links

Herbarium Sheet: <http://id.snsb.info/snsb/collection/408615/477935/192498>

DNA Sample: http://id.snsb.info/zsm/collection_zsm/582725/648925/537845

Fossile Plates: <http://id.snsb.info/snsb/collection/656114/713618/362615>

Preserved Specimen: http://id.snsb.info/zsm/collection_zsm/595841/662041/550961

Observation: http://id.snsb.info/bfl/collection_bayernflora/31736/961374

Git: <http://services.snsb.info/gogs>

RecordBasis: <https://terminologies.gfbio.org/api/terminologies/RECORDBASIS/allterms>

RecordBasis: <https://gfbio.biowikifarm.net/wiki/RecordBasis>

Kingdom: <https://terminologies.gfbio.org/api/terminologies/KINGDOM/allterms>

ABCD Mandatory Terms: https://gfbio.biowikifarm.net/wiki/ABCD_for_data_publication