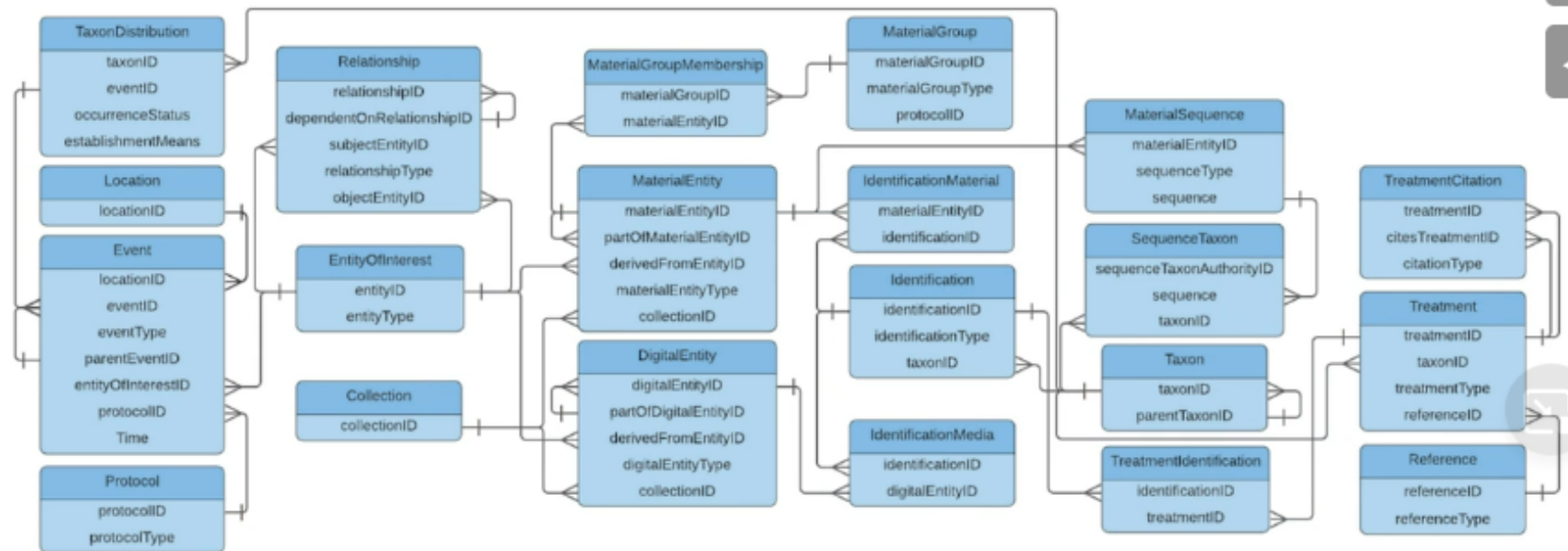


# GBIF Data Model

GBIF "Unified Common Model" or "Grand Unified Model"



<https://www.gbif.org/new-data-model>

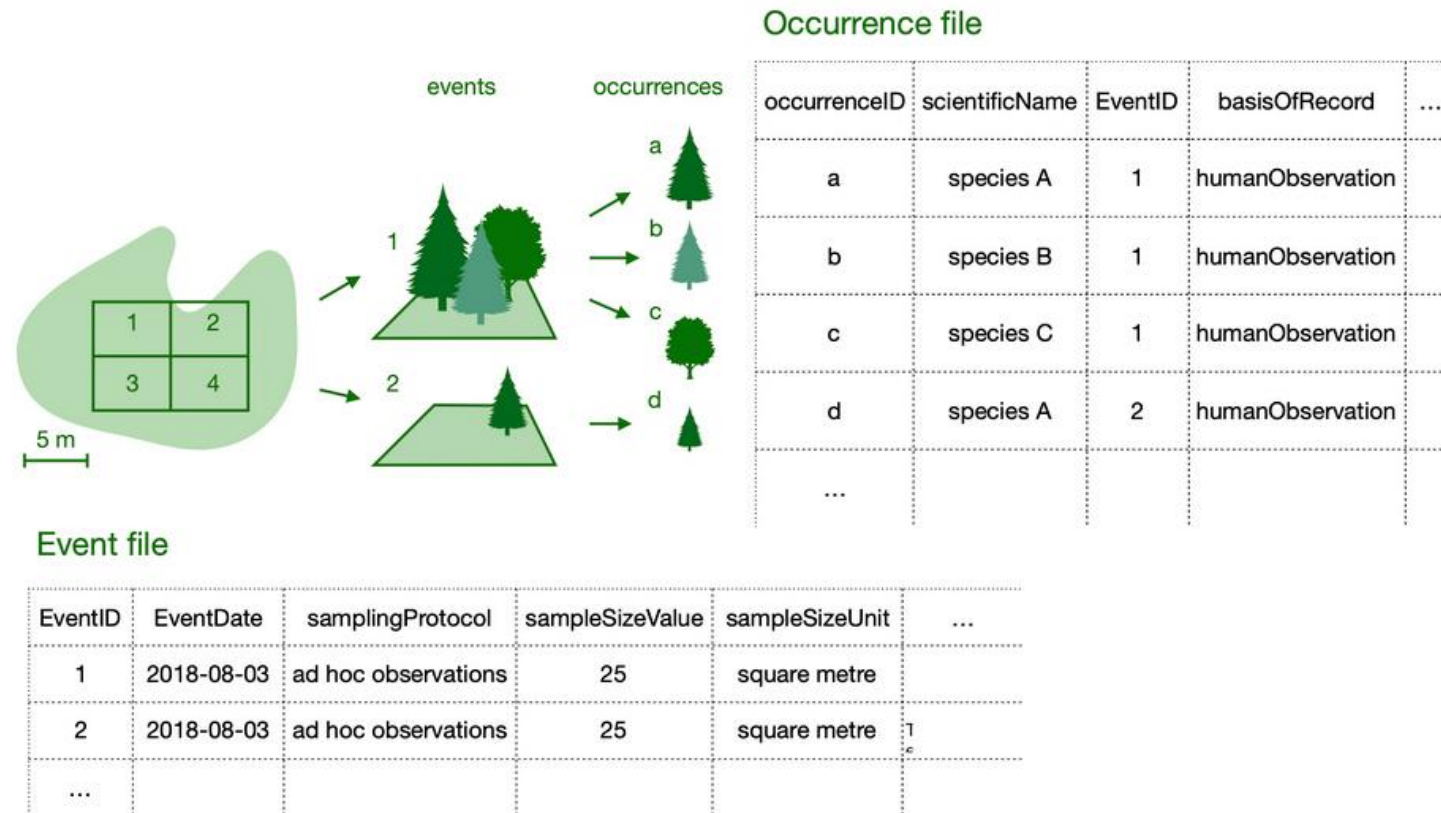
01:32

Diversifying the GBIF Data Model: <https://tinyurl.com/diversifying-gbif-data>



# GBIF Classes of datasets

- Resource datasets  
(metadata-only datasets)
- Checklists
- Occurrence datasets
- Sampling events datasets



<https://data-blog.gbif.org/post/choose-dataset-type/>

# GBIF Data publishing and data papers

## Data papers explained

A data paper is a searchable metadata document, describing a particular dataset or a group of datasets, published in the form of a peer-reviewed article in a scholarly journal.

Unlike a conventional research article, the primary purpose of a data paper is to describe data and the circumstances of their collection, rather than to report hypotheses and conclusions.

GBIF has been working with partners in academic publishing to promote the data paper as a means of bringing credit and recognition to all those involved in data publication; to alert the scientific community to the existence of biodiversity datasets and the value they can bring to particular research projects; and as a mechanism for quality assessment and control of data accessible through GBIF and other networks.

<https://www.gbif.org/data-papers>

# GBIF Data publishing and data papers

## Data paper tools

### GBIF Integrated Publishing Toolkit (IPT)

GBIF has worked with [Pensoft Publishers](#) to develop a workflow for generating a data paper manuscript using the GBIF Metadata Profile, provided as part of the [Integrated Publishing Toolkit \(IPT\)](#). At a click of a button you can download the metadata as an RTF-formatted manuscript ready for editing and submission for peer review following the normal procedures of any journal accepting this kind of publication (see table below).

### NephilaPaper

This tool created by SiBBR extracts metadata from a Darwin Core Archive (DwC-A), and creates a manuscript in RTF format ready for editing and submission.

### alpha Writing Tool

The [alpha Writing Tool](#) further simplifies the process of publishing a data papers. Metadata from a dataset can be uploaded, and the entire process from collaborative writing, commenting, and editing, over submission and peer review, to publication and post-publication revising is handled in one web-based tool. Detailed instructions on importing metadata from IPT-hosted datasets are [available](#).

The alpha Writing Tool currently supports direct submission to [Biodiversity Data Journal](#).

<https://www.gbif.org/data-papers>

# Discussion board:

GBIF data model

GBIF dataset classes

Data publishing and data papers

Datasets from universities, agencies and business sector for ecological and environmental analyses

