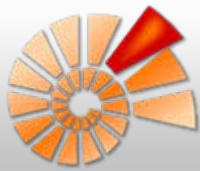


DiversityCollection

Theorie, Projekte, Datenflüsse, Netzwerke und Dienste

Dagmar Triebel



Datenbank-Framework Diversity Workbench

www.diversityworkbench.net

seit 1999

beteiligt

- Julius Kühn-Institut
Braunschweig –
Berlin (vormals BBA)
- Universität Bayreuth
- Botanische
Staatssammlung
München/ SNSB

Main

Home | Changes | Index | Edit | Find: Go

Diversity Workbench – Software Components for Building and Accessing Biodiversity Information

The Diversity Workbench is work in progress, aiming at developing a set of information models and application components that collaborate through agreed software interfaces. That is, each component of the Workbench applications uses services from other applications, but at the same time does not need to know about the internal design and implementation of them (encapsulation principle). The goal is increased reuse and collaboration across project and national borders.

For each component of the Diversity Workbench we aim at providing a comprehensive documentation of the application and the information model online. The framework for these components is currently still under development as we continue to learn about the necessary components and the best approach to the modularization of biodiversity information. A draft version providing important insight into the [framework concept](#) is, however, available.

In an initial phase during the [GLOPP project](#), a set of prototypes was developed in Microsoft Access. The prototype applications are still available. With the exception of [DeltaAccess/DiversityDescriptions](#) they are by now largely obsolete. DeltaAccess predates the Workbench concepts and is actively used and under active development.

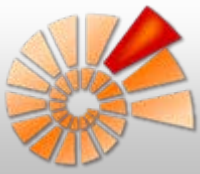
Diversity Workbench online help and user guides

These are collected on a [separate Wiki web](#)!

Diversity Workbench information models

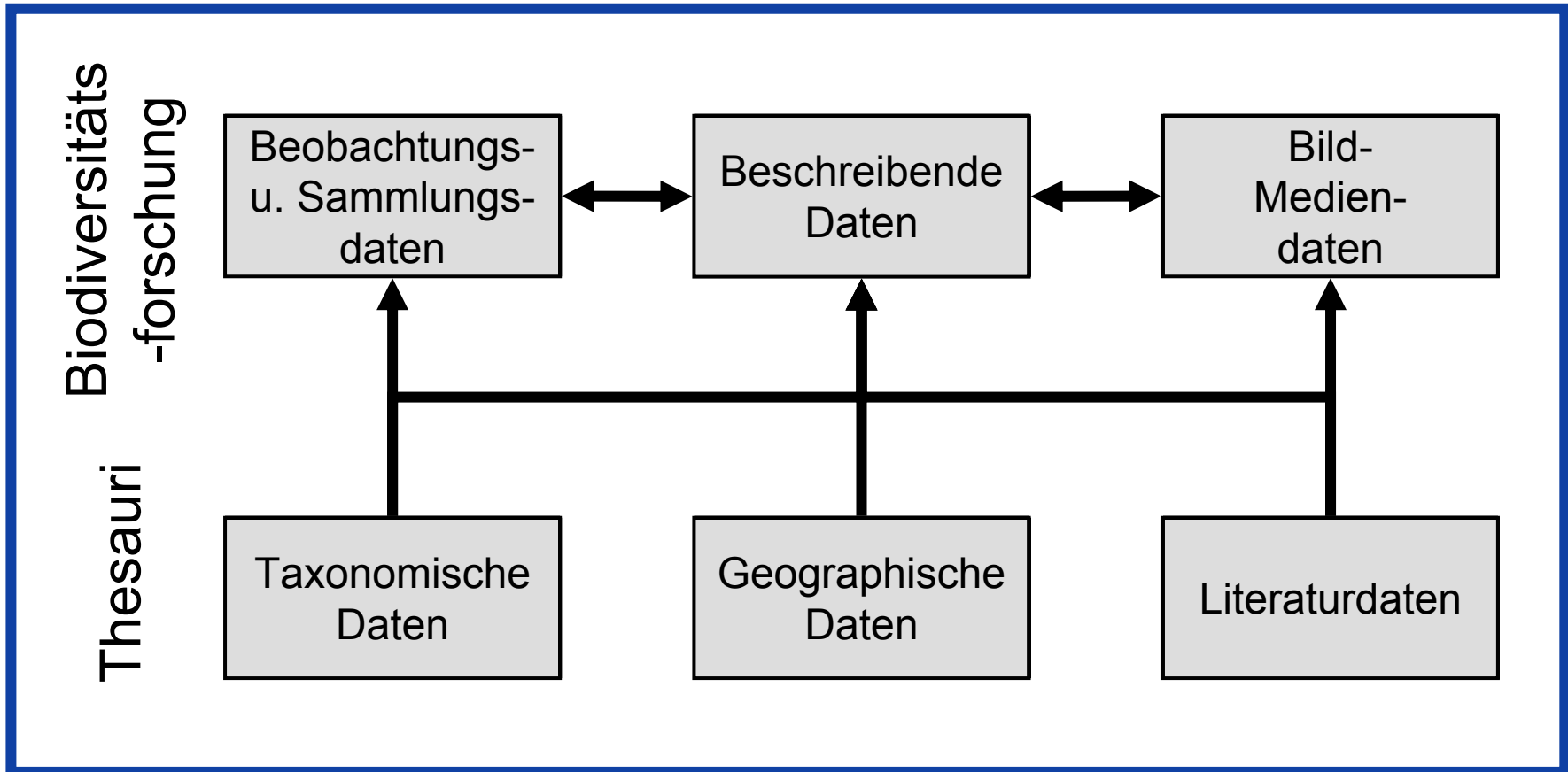
- [DiversityCollection](#)
- [DiversityDescriptions](#)
- [DiversityExsiccatae](#)
- [DiversityGazetteer](#)
- [DiversityResources](#)
- [DiversityReferences](#)
- [DiversityTaxonomy](#)
- [DiversityTaxonNames](#)

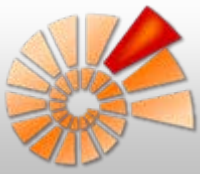
Fertig Lokales Intranet



Datentypen in der Biodiversitätsforschung

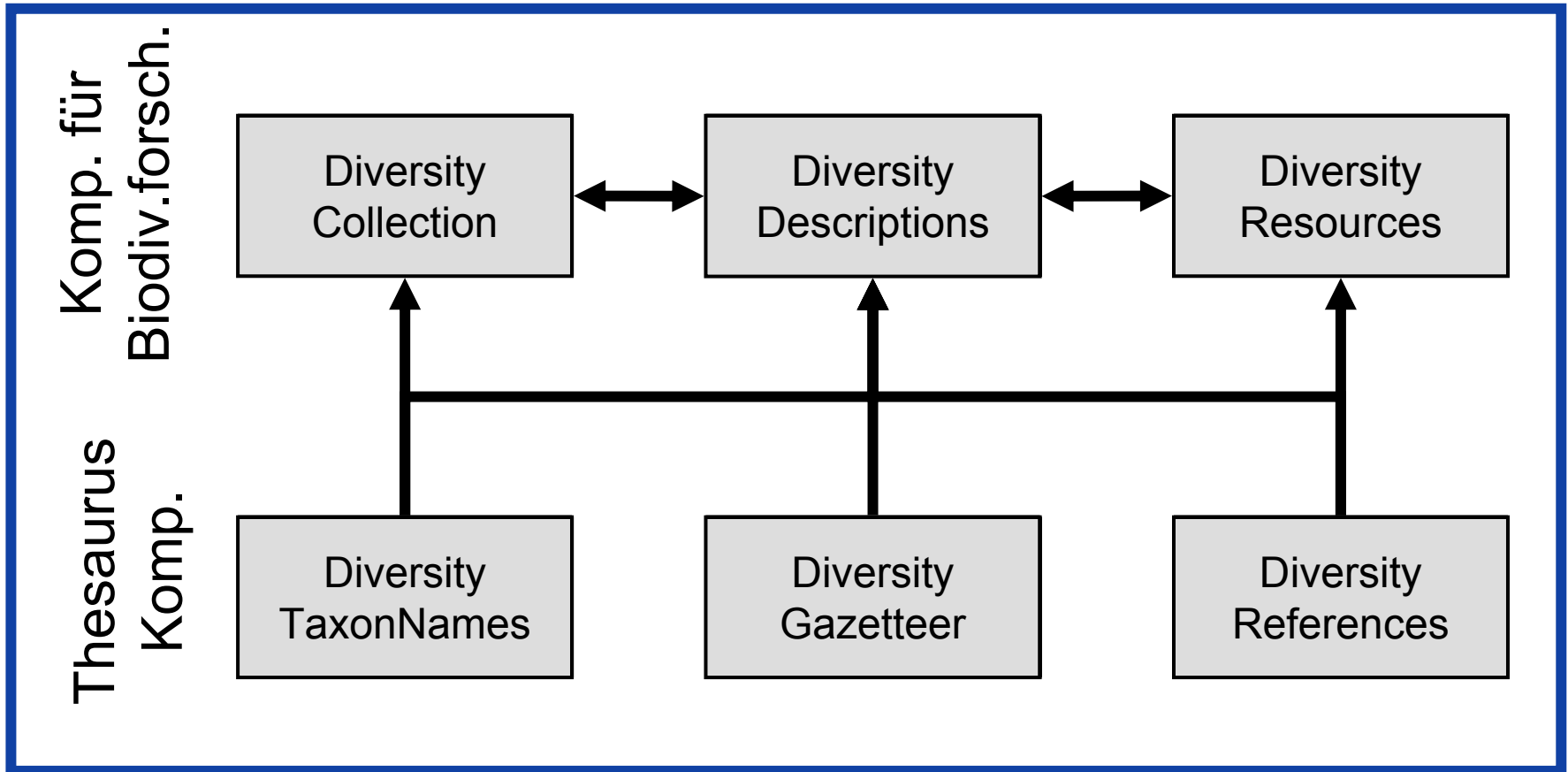
www.diversityworkbench.net

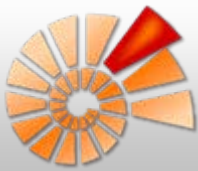




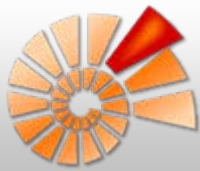
Hauptkomponenten der Diversity Workbench

www.diversityworkbench.net



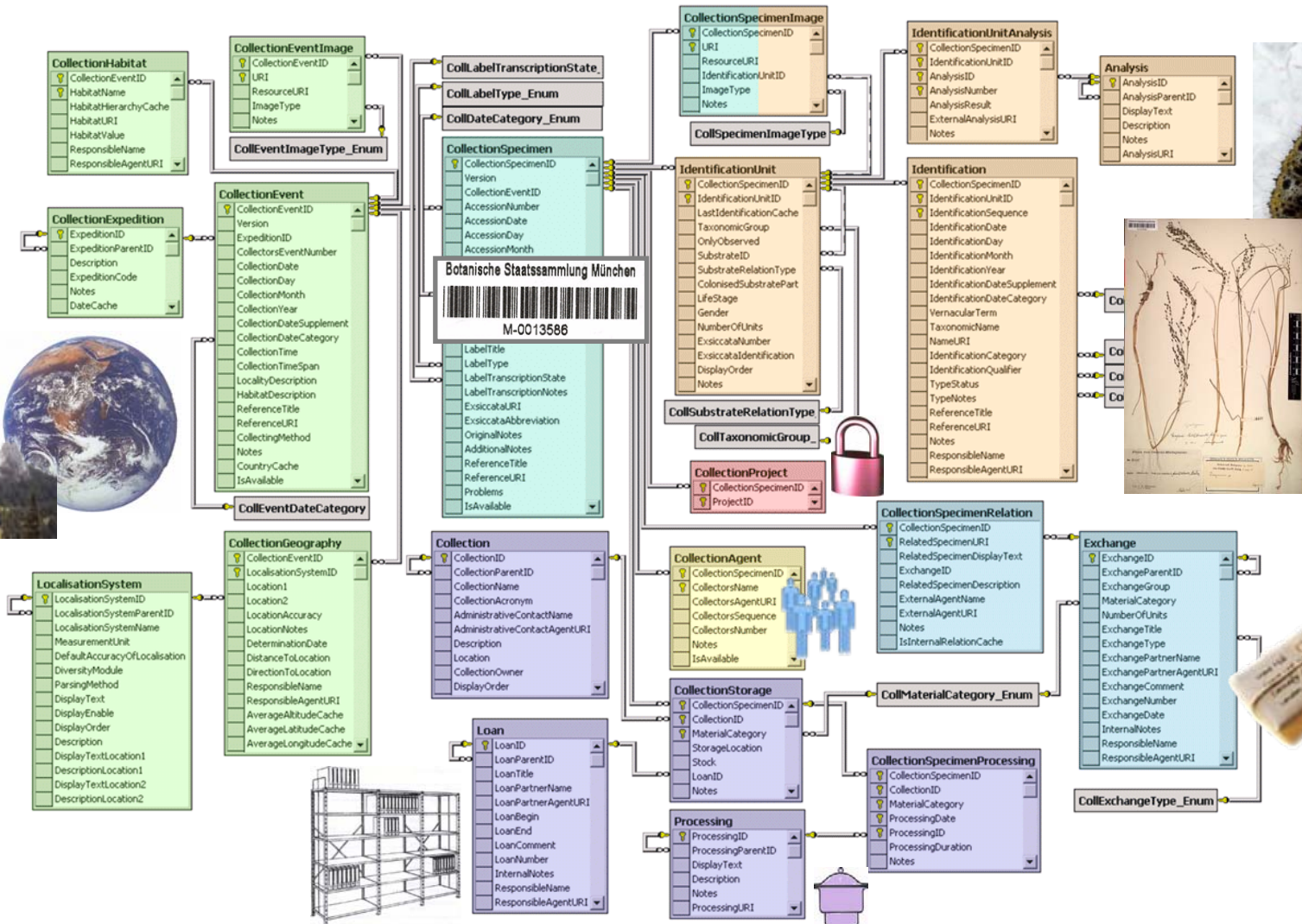


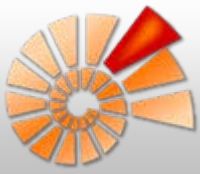
- Aktuelle Schwerpunkte:
 - Modellierung von Datenbanken (seit 1999)
 - Entwicklung von .Net Clients (seit 2002)für
 - Sammlungsdaten (seit 1999)
 - Taxonomische Daten (seit 2003)
- In Planung:
 - Deskriptive (inkl. organismenbezogene ökologische) Daten



DiversityCollection - ER-Diagramm

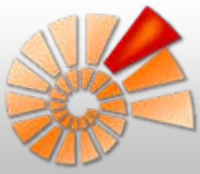
www.diversityworkbench.net



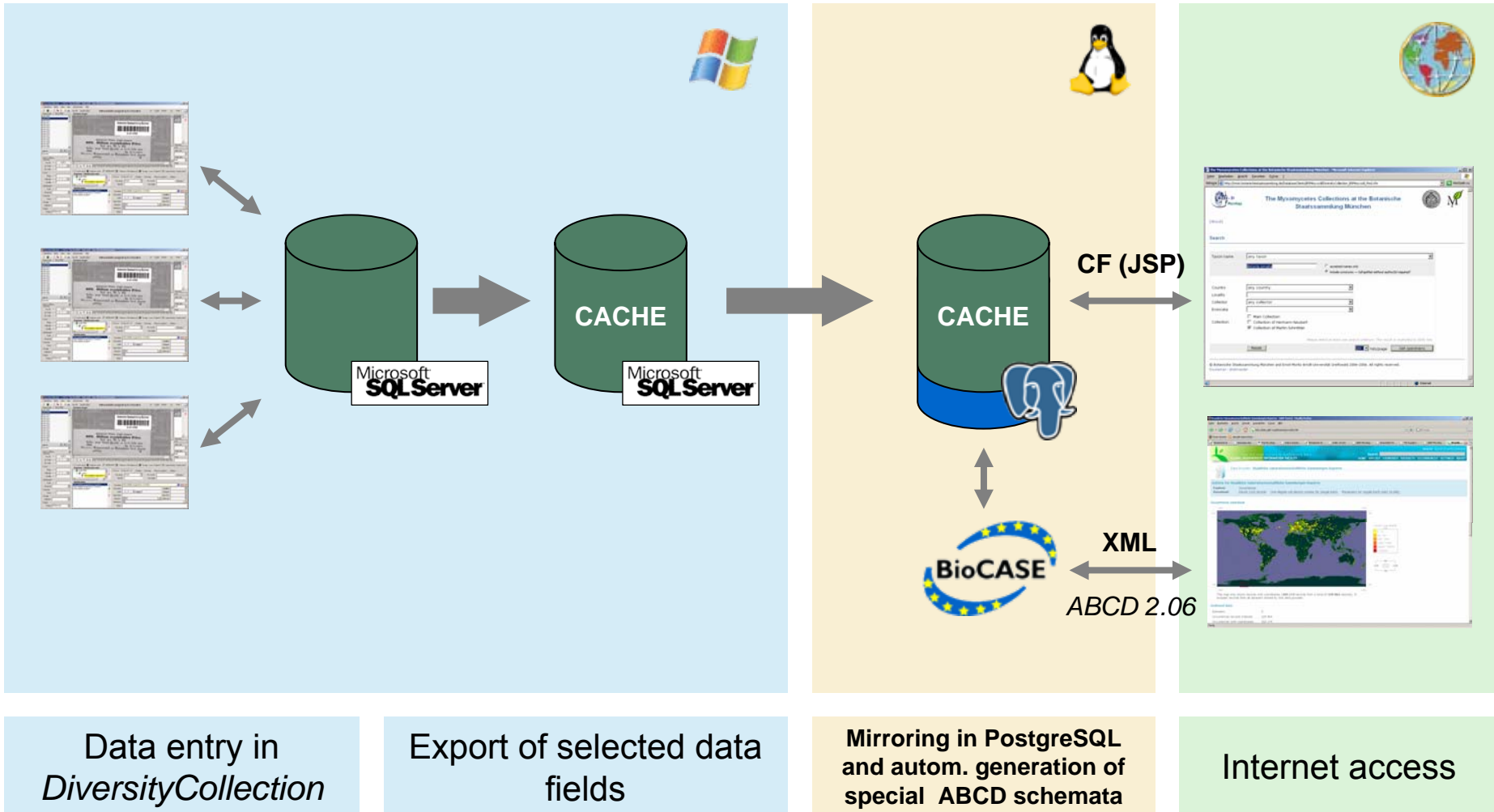


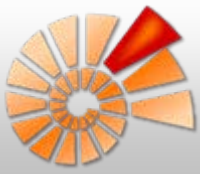
- Projekte/ Sammlungen
 - Aktuell ca. 159.000 Datensätze
 - 16 mykologische Projekte/ Samml. (davon 10 der BSM/SNSB)
 - 9 botanische Projekte (davon 3 der BSM/SNSB)
 - 2 zoologische Projekte (SAPM/SNSB)
- Datenimporte laufend bzw. in Planung ...
 - Paläontologische Sammlungen (BSPG/SNSB)
 - Sammlungen von Kiesel- und Zieralgen (BSM/SNSB urspr. in MS Access bzw. Specify)



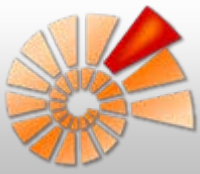


DiversityCollection — Datenfluss





- Projektspezifische Webschnittstellen (eigene Programmierung in CF bzw. JSP)
- GBIF International Portal (BioCASE-Wrapper)



Diversity Collection: Projektspezifische Webschnittstellen

www.diversityworkbench.net

Search

Taxon name

Country

Locality

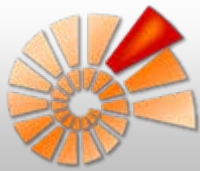
Collector

Exsiccata

Collection Main collection
 Collected
 Collected

© Botanische Staatssammlung München
Disclaimer · Webmaster

- Eigene Webschnittstelle für jedes Projekt bzw. jede Sammlung (derzeit 9 verschiedene Schnittstellen)
- Anbindung von speziellen Webdiensten z. B. Darstellung von Fundortdaten über *GoogleMaps*
- Einbindung von *DiversityTaxonNames*
→ z. B. voller Zugriff auf alle Synonyme aus der Datenbank *DiversityTaxonNames_fossils*
- **Vorteil:** Spezifitäten des jeweiligen Projektes können berücksichtigt werden





DiversityCollection: Webschnittstellen – Suchmaske

www.diversityworkbench.net

Epiphytic Lichens of G. Lettau at the Botanical Museum Berlin-Dahlem - Microsoft Internet Explorer

Adresse http://www.gbif-mycology.de/DatabaseClients/Blettaucoll/DiversityCollection_Blettaucoll_Find.cfm Wechseln zu

 **Epiphytic Lichens of G. Lettau at the Botanical Museum Berlin-Dahlem** 

[About]

Search

Taxon name

accepted names only
 include synonyms — *full epithet without author(s) required!*

Country

Locality

Collector

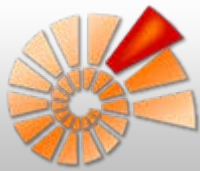
Phorophyte

Please select at least one search criterion! The result is restricted to 2000 hits.

hits/page

© Botanische Staatssammlung München and Botanical Garden and Museum Berlin-Dahlem 2005–2006. All rights reserved.
[Disclaimer](#) · [Webmaster](#)

Fertig Internet



DiversityCollection: Webschnittstellen – Ergebnistabelle

www.diversityworkbench.net

Epiphytic Lichens of G. Lettau at the Botanical Museum Berlin-Dahlem - Microsoft Internet Explorer

Adresse http://www.gbif-mycology.de/DatabaseClients/BleTTauColl/DiversityCollection_BleTTauColl_List.cfm?TaxonNameMainUnit=Lecanora%2520conizaeoides%2520Nyl%252E%2520ex%2520 Wechseln zu

Epiphytic Lichens of G. Lettau at the Botanical Museum Berlin-Dahlem

[About]

Search result

4 specimens (1 taxon) were found for

Taxon name: Lecanora conizaeoides Nyl. ex Cromb.
Country: any country
Collector: any collector
Phorophyte: any host plant

[New search](#)

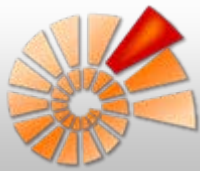
Create map using ...
JavaScript required

Items 1 to 4 :

- Lecanora conizaeoides Nyl. ex Cromb. (B 60 0025251)**
Germany, Thüringer Wald.: Unweit Bahnhof Gehlberg, 650 m.
- Lecanora conizaeoides Nyl. ex Cromb. (B 60 0025254)**
Germany, Thüringer Wald.: Sturmheide bei Ilmenau (600 m.)
- Lecanora conizaeoides Nyl. ex Cromb. (B 60 0111827)**
Germany, Thüringen: Alteburgenanlagen bei Arnstadt, 320 m.
- Lecanora conizaeoides Nyl. ex Cromb. (B 60 0111827a)**
Germany, Thüringen: 2) Kichberg bei Dannheim

© Botanische Staatssammlung München and Botanical Garden and Museum Berlin-Dahlem 2005–2006. All rights reserved.
[Disclaimer](#) · [Webmaster](#)

Fertig Internet



DiversityCollection: Webschnittstellen – Detailansicht, Verknüpfung

www.diversityworkbench.net

Epiphytic Lichens of G. Lettau at the Botanical Museum Berlin-Dahlem

[About]

Specimen data

Taxon name: Lecanora conizaeoides Nyl. ex Cromb.
→ LIASnames

Acc. Number: B 60 0025254

Country: Germany

Locality: Thüringer Wald.: Sturmheide bei Ilmenau (600 m.)

Date: 1909-03-26

Collector: Lettau, G.

Phorophyte: Betula sp.

Phorophyte/Associations:

- Betula sp.
- Lecanora conizaeoides Nyl. ex Cromb.**
- Lecanora pulicaris (Pers.) Ach.
- Scoliosporum sarothamni (Vain.) Vězda

New search

Create map using ... JavaScript required

Notices of errors of any kind are much appreciated by the editorial staff.

© Botanische Staatssammlung München and Botanical Garden and Museum Berlin-Dahlem 2005
Disclaimer · Webmaster

Fertig

Search Result

Entered Name: Lecanora conizaeoides Nyl. ex Cromb. [Printer friendly version](#)

Name ID: 1009522

Accepted Name: Lecanora conizaeoides Nyl. ex Cromb.

Synonyms:

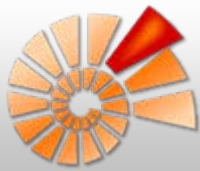
- = Lecanora pityrea Erichsen
- = Lecanora pseudovaria Degel.

Classification:

- Ascomycota
- Pezizomycotina
- Lecanoromycetes sensu Reeb et al. 2001
- Lecanoromycetidae
- Lecanorales Nannf. 1932
- Lecanoraceae Körb. 1855
- Lecanora Ach.
- Lecanora conizaeoides Nyl. ex Cromb.

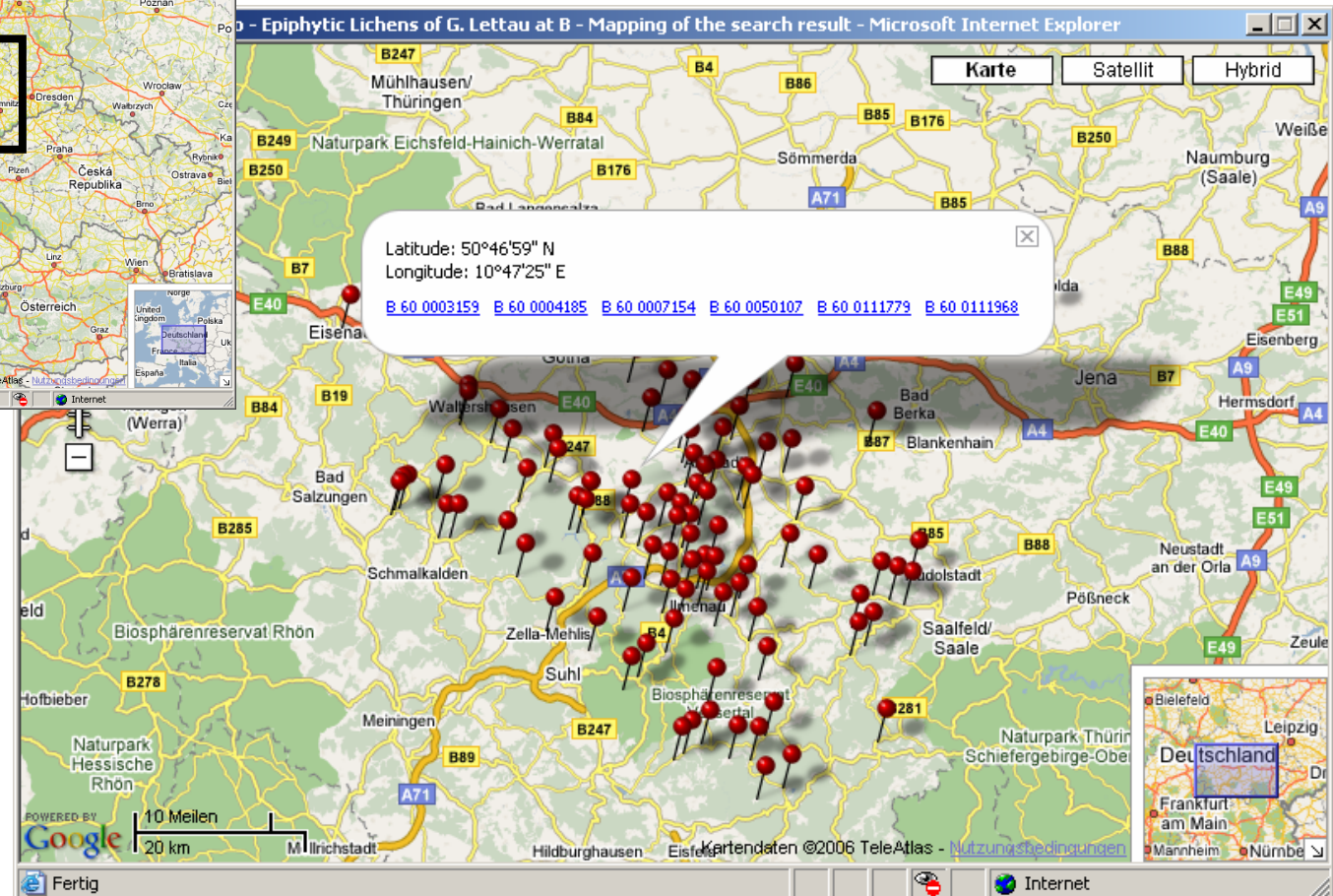
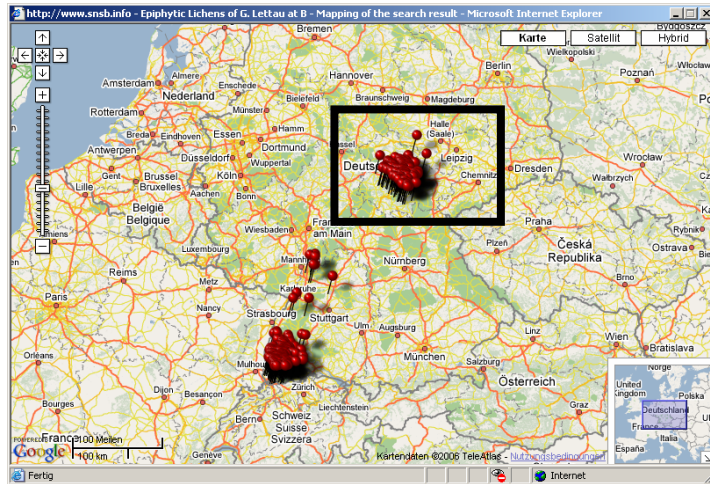
Fertig

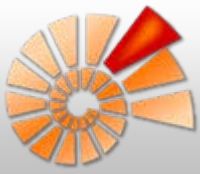
Unter diesem Namen
wird der Beleg geführt



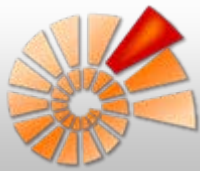
DiversityCollection: Webschnittstellen – GoogleMaps Webservice

www.diversityworkbench.net





- Projektspezifische Webschnittstellen (eigene Programmierung in CF bzw. JSP)
- **GBIF International Portal (BioCASE-Wrapper)**

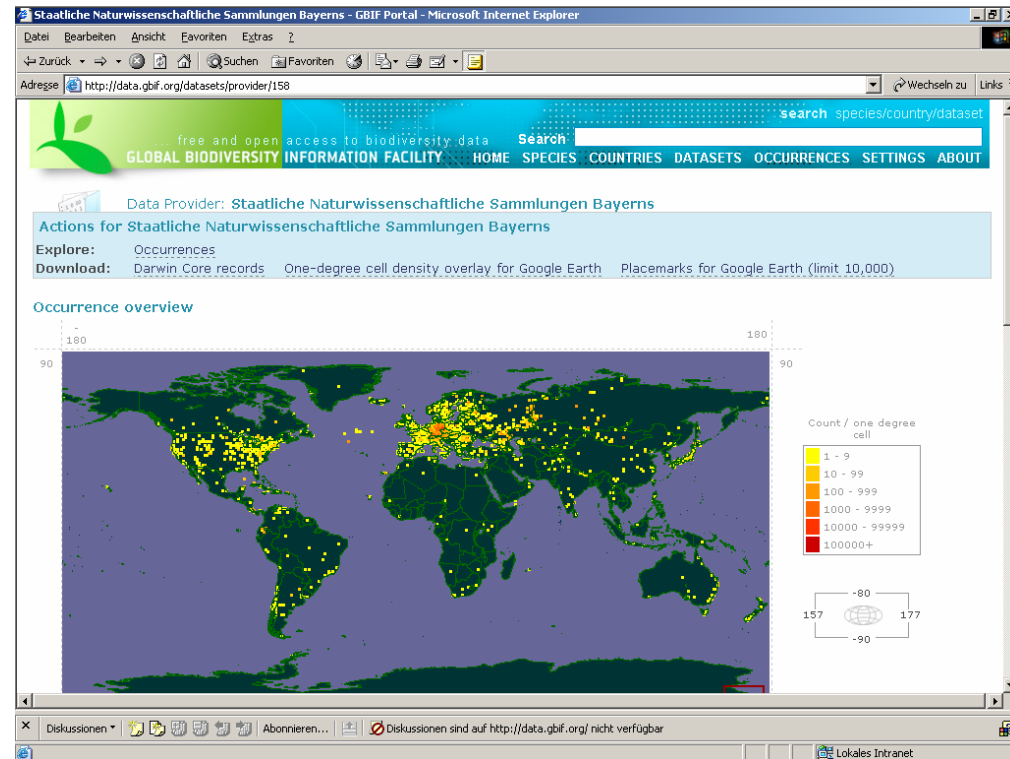


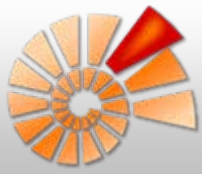
DiversityCollection: GBIF International Portal

www.diversityworkbench.net

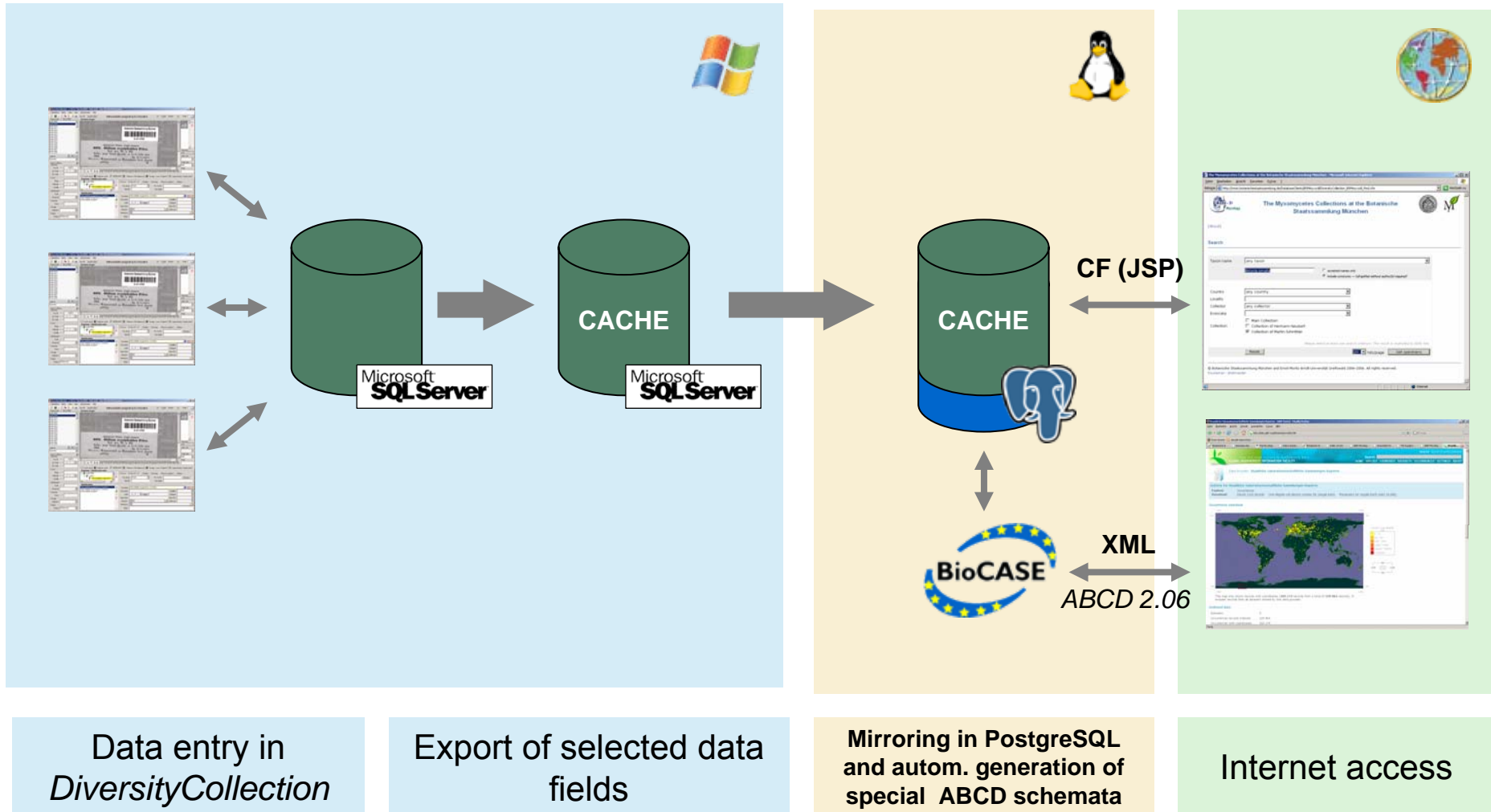


- 12 Projekte bzw. Datenquellen
- 130.000 Belege
- ~ 102.000 Belege mit Koordinaten
- ~ 9.500 Taxa
- 100% an GBIF-Namensindex angeschlossen





DiversityCollection — Datenfluss

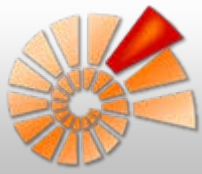


Data entry in *DiversityCollection*

Export of selected data fields

Mirroring in PostgreSQL and autom. generation of special ABCD schemata

Internet access



DiversityCollection – GBIF International Portal

www.diversityworkbench.net



- Daten über gemeinsames internationales Portal verfügbar, verbleiben auf dem eigenen Server
- Von SNSB werden aktuell 46 *Concepts* (= Datenfelder) an GBIF International geliefert
- Standardisierte Datenabfrage via BioCASE-Wrapper über ABCD-Protokoll
- **Vorteil:** Einheitliche Datenstruktur für alle angebundenen Projekte bzw. Sammlungen (zur Zeit über 300 Datenprovider)

GBIF DATA (PROTOTYPE)

- Browse
- Search
- How to search
- Providers
- Data policy
- Google Earth

ABOUT GBIF

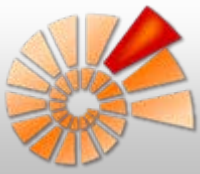
- Press
- What is GBIF?
- Demonstration Projects
- New MOU (2007-2011)
- Signatory table
- GBIF's Current Members
- How to Join GBIF
- GBIF Directory
- Documents & History
- Ebbe Nielsen Prize
- Symposia & Workshops
- Work Programme

TOOLS AND SERVICES

- Newsletters
- Mailing lists
- Wiki
- UDDI registry
- Standards
- Links
- CIRCA
- Calls for tender and jobs
- GBIF tools download

SUPPORT

- GB documents (basic)



DiversityCollection: Workshop heute

www.diversityworkbench.net

Infos unter

unter <http://www.snsb.info>, dort link zu **IT Workshops**